

**Explosion Proof 26 Watt Fluorescent Handheld Light - Class 1 Division 1 - 100' Cord**

Part #: EPL-FL26-100

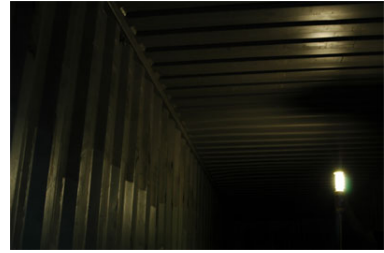
**Made in the USA**

**The Magnalight EPL-FL26-100 Hazardous Area Fluorescent Work light is F.M. approved Class 1 Division 1 Groups C and D - FM 508 listed and is ideal for close quarter work and inspection activities in hazardous locations requiring explosion proof protection.**

This 26 watt explosion proof fluorescent work light from Magnalight produces 1,740 lumens of fluorescent illumination and comes complete with 100 feet of explosion proof cord. The EPL-FL26-100 fluorescent drop light ballast is contained within the handle while the housing is constructed of non sparking aluminum with molded bumper guards, an annealed glass tube shield and integral lamp shock absorbers. An inline ballast is also available. This hazardous location hand lamp is designed to Article 500 of the National Electrical Code and is Class 1, Division 1 and Class 2 Division 1 hazardous location environment approved. This explosion proof fluorescent hand lamp can be installed and used within the hazardous location area making it ideal for hazardous work areas where a ready source of easily managed lighting is desired.



40' Container Dark

[Click Photos to Enlarge](#)[Illuminated by EPL-FL26-100-HR](#)[Click Photos to Enlarge](#)

This 26 watt fluorescent light is suitable for use in areas where petrochemical vapors and various dusts are present and projects 1,740 lumens of light, roughly equivalent to a 100 watt incandescent bulb as estimated by Sylvania. Fluorescent lights are popular in paint prep, painting and post-paint inspection operations due to the even white color light produced. Incandescent lights tend to create yellowish, shadowy light that confuses the eye and makes it difficult to examine a work area with consistency. The light output, color and evenness of coverage make fluorescent lights popular for a wide variety of close quarter work and inspection activities. This unit is rated Class 1, Division 1 and is complete with 100' of SOOW 16/3 AWG cord ending in a 5-15 straight blade plug that meets federal specification JC-580A.

This hand lamp has the ballast inside the handle so the operator doesn't need to drag the ballast housing around. This can be particularly annoying when the transformer becomes entangled in the cord. The ballast is lightweight and encapsulated in the handle so that operator can easily move to different positions without having to stop and adjust an inline ballast unit. The feedback on this feature has been very positive. This explosion proof fluorescent hand light comes standard with 120 Volts, 60 Hz for US voltages but is also available in 120 Volts, 50 Hz (Mexico) and 220 volts, 50 Hz for international usage.

#### **Made in USA Quality**

1. Federal Spec JC-580A Cord.
2. Indoor or outdoor use.
3. 35 amp, 1-4 conductors 600 Volt, 5-12 conductors 250 Volt.
4. Rugged fabricated steel and cast aluminum construction.
5. Gray epoxy finish on steel parts.
6. FM Listed 508 table 36.1 (3 and 4 conductor units with cable only)
7. Conforms to NEMA 9 and NEMA 4 (IP56) standards
8. SOOW cable.
9. 4-roller adjustable cable guide and Ball Stop

#### **Lamp Features**

- 26 watt fluorescent light produces 1740 lumens
- Non-sparking aluminum housing
- Ballast contained in handle (inline also available)
- Molded rubber bumper guards
- Annealed glass tube shields prevent shattering
- Integrated lamp shock absorbers prevent drop damage to bulbs
- Swivel hook for hanging and hands free operation
- Explosion proof cord

**Specifications / Additional Information**

**EPL-FL26-100 Work Light**

**FM Listing:** United States

**Dimensions:** L-14.5 " Dia-3.5"

**Lux:** At Lens: 15,000

**Total Watts:** 26 watts

**Voltage:** Stnd-120V-60hz Optional-120 Volts, 50 Hz and 220 volts, 50 Hz

**Total Lumens:** 1,740

**Mounting:** None

**Wiring:** 100' SOOW Cord

**F.M. Approval:** [U.S Certificate](#)

**F.M. Ratings**

Class 1, Division 1 for Groups C, D

Class II, Division 1 Groups E, F, G

Class III, Division 1

NEMA 4

FM Listed JC-580A Cord

**Special Orders- Requirements**

Contact us for special requirements

**Toll Free:** 1-800-369-6671

**Intl:** 1-903-498-3363

**E-mail:** sales@magnalight.com

Scroll Down to Purchase- Same Day Shipping on This Light!

Part #: [EPL-FL26-100 \(1970\)](#)

